

residence THREE

2,904 SQ. FT.

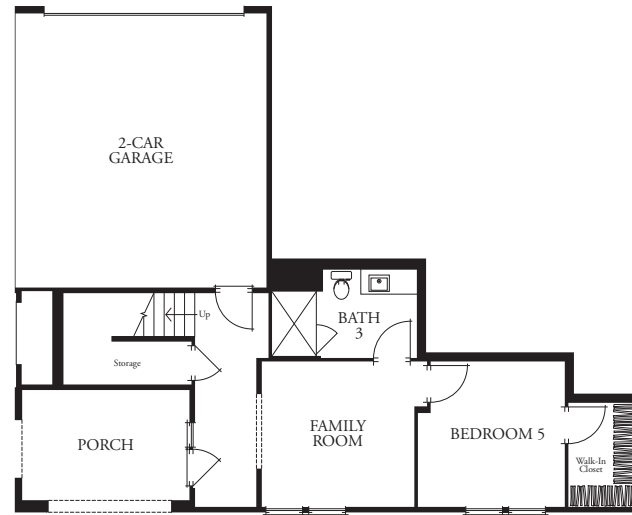
5 BEDROOMS

FIRST-FLOOR SUITE WITH FAMILY ROOM

3 BATHS

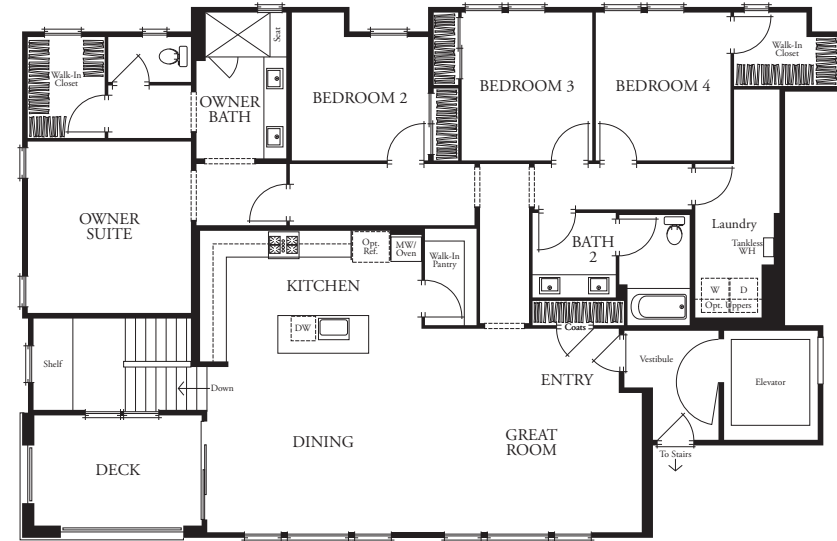
2-CAR GARAGE

FIRST FLOOR



Ground Level
(Level 2, Plan 3, Unit 202)

SECOND FLOOR



Level 2

hyde park
AT BOULEVARD

PRELIMINARY AND SUBJECT TO CHANGE

Brookfield Residential reserves the right to change floor plans, elevations, specifications, materials, colors, features or sales prices without prior notice. Such changes may not always be reflected in our model homes. All renderings, floor plans and handouts are artists' conceptions and are not intended to be actual depictions of the buildings, walks, driveways or landscaping. Window locations and sizes may vary per plan and elevation. Ask your sales representative for details. Square footages are approximate. CA DRE license #01996804. 7/2020. 🏠

Sales Office Address

5710 Iron Horse Parkway, Dublin, CA 94568

Phone Number

925.390.3920

**Brookfield
Residential**